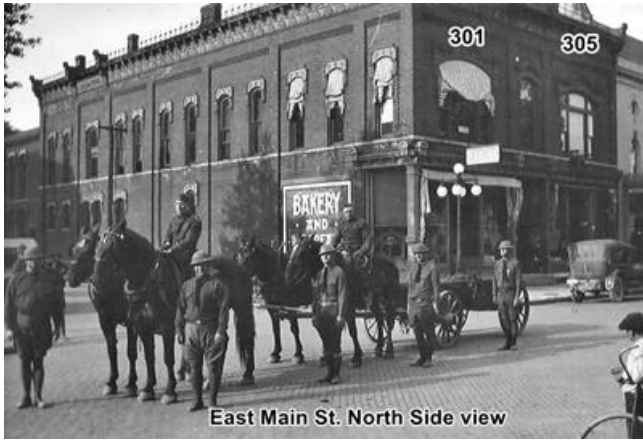


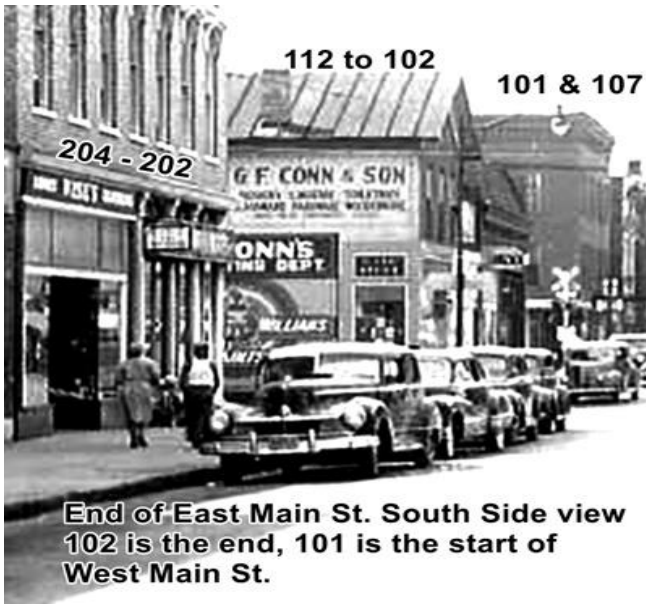
Early Ottawa Photographs



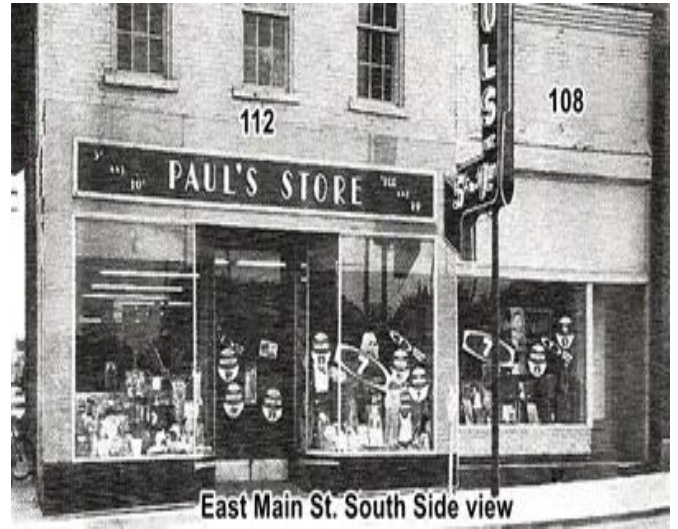
1. East Main St. North Side view



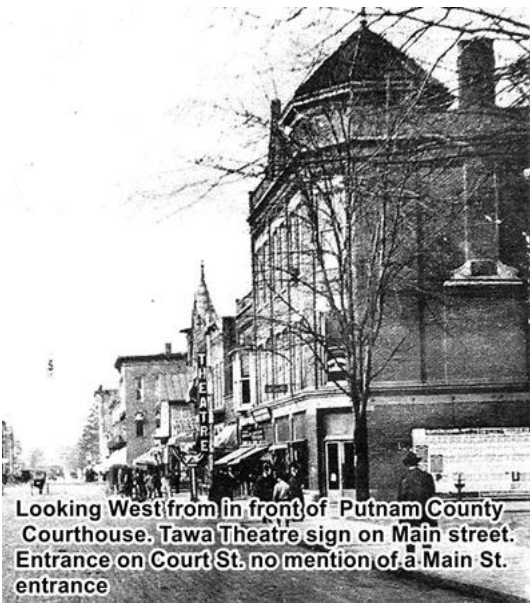
2. Looking West on Main St. - Original Putnam County Courthouse 1868 - 1912 front entrance is the first building on the right



3. End of East Main St. South Side view 102 is the end, 101 is the start of West Main St.



4. East Main St. South Side view



5. Looking West from in front of Putnam County Courthouse. Tawa Theatre sign on Main street. Entrance on Court St. no mention of a Main St. entrance



6. Intersection of Main St & Oak St. looking East

Early Ottawa Photographs continued



7. WW II Funeral Parade Deceased unknown



8. Putnam County boys leaving Ottawa to fight Germany



9. Year, 1908 - Intersection of Main St & Oak St. looking East



10. East Main St. South Side

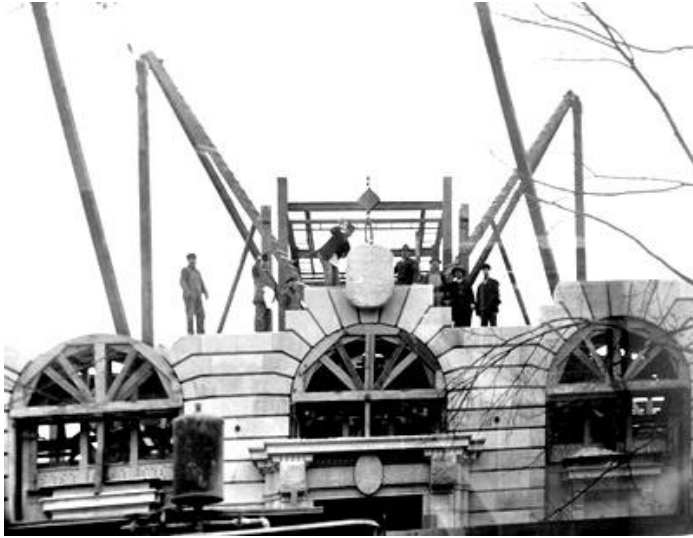


11. Street numbers (from Taft Ave.)



12. Looking West on Main Street from in front of Frey's Hardware

Early Ottawa Photographs continued



13.